

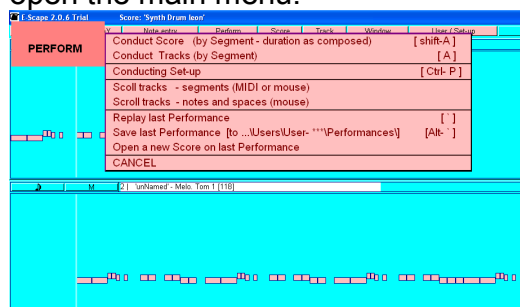
## A Brief Overview of E-Scape

E-Scape has a main 'Score' window, showing one or more tracks of music and the notes within, similar to most conventional 'sequencer' software. Notes are shown as graphical bars with time along the x-axis, and pitch upwards.



## Performing with E-Scape

Let's look at working as a 'Performer' user'. As always, you press a switch or space bar to open the main menu:



Here you can choose or load in music files, try out playing different tracks to get familiar with the music, set up different options for performing. You can also start performing - for example the first three options in the menu give you three different ways of performing your music:

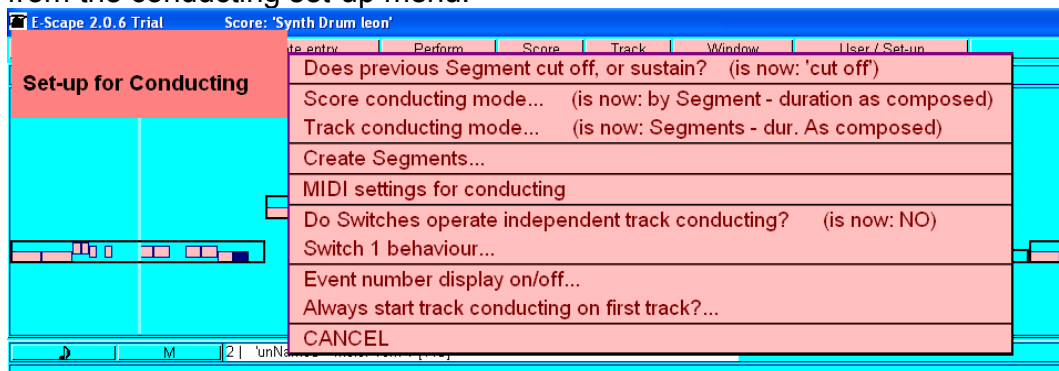
- you can scroll through all the notes with mouse or other movements;
- you can press a switch or key to conduct though each track separately (one at a time, or all at once);
- you can get the whole Score to follow the track you are conducting — this is called 'Score Conducting':



For example, here you are conducting track 1, and the rest of the tracks will follow you. Each time you press your switch or other control, the next musical segment plays. In the example you can see the segments are a whole phrase, but you can set it up to have short segments — even play each note, or even longer ones, depending on how often you are able to press your switch.

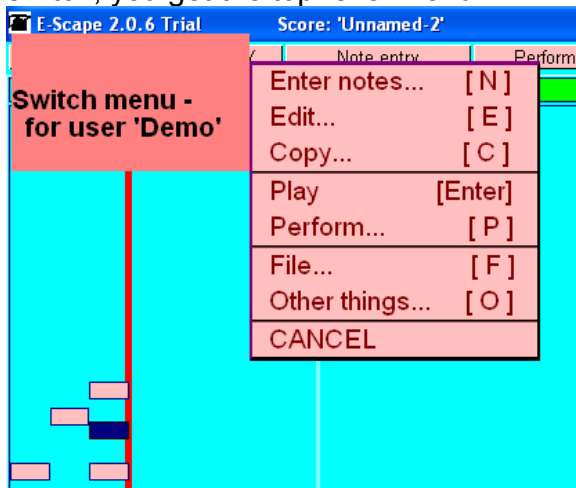
You can also conduct backwards, which can let you improvise and make up new music as you play.

There are many other options to change how the music is performed, as you can see from the conducting set-up menu:

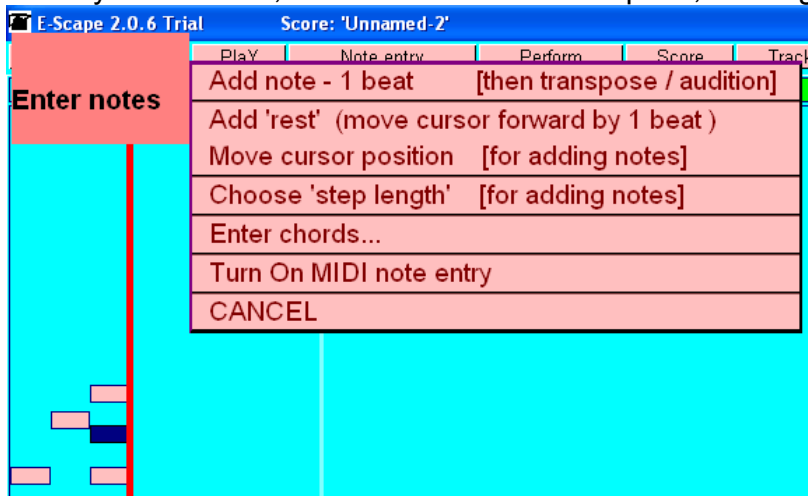


## Composing with E-Scape

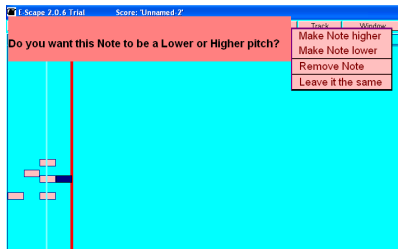
You can also operate more as a composer to write in your own music. If you press a switch, you get the top-level menu:



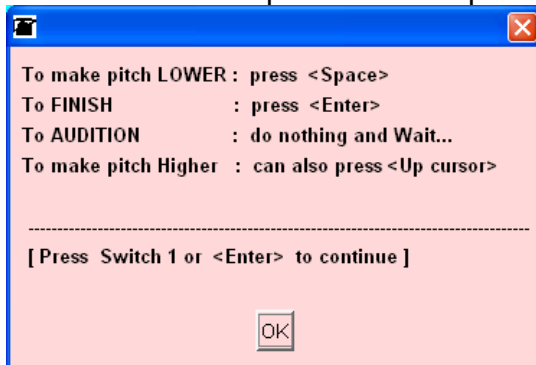
Now we show some examples of doing things - let's add a new note to the ones we have already there. First, select the 'enter notes' option, which gives us a second menu:



Selecting the first option will add a note with the current length (eg 1 beat). The language is deliberately simple, but we can change this to use more formal musical language. When the note is added - initially it will have the pitch of the last note, but you are then prompted to choose what to do, eg to make it lower or higher.



You then can transpose it one step at a time by pressing a switch:

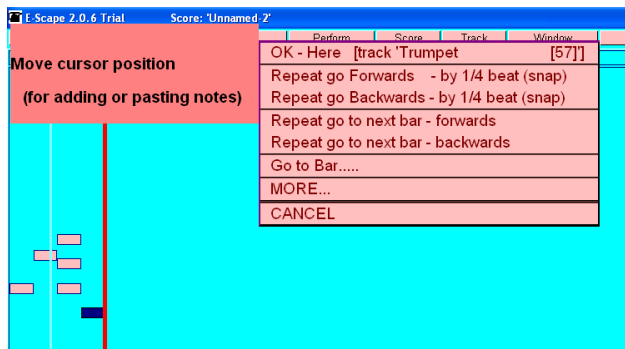


If you pause, then the music around the new note is played back automatically. When you stop transposing, you then still have another chance to change things:

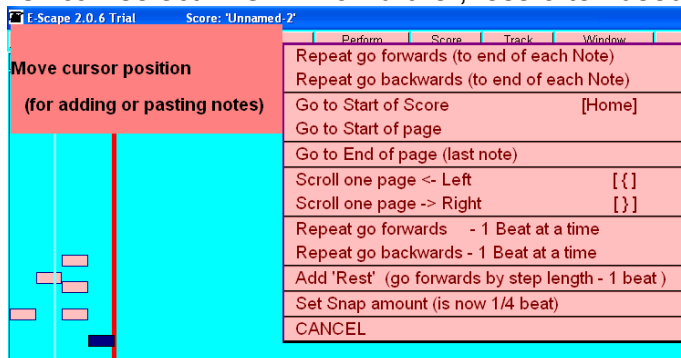


### Positioning new notes

The 'step cursor' (red line) is positioned where a new note is wanted. By default it always goes to the end of the last note entered, so a beginner will usually start by writing a tune'. You can also move it to where you want:



Or can select 'MORE' for further, less often used, options:

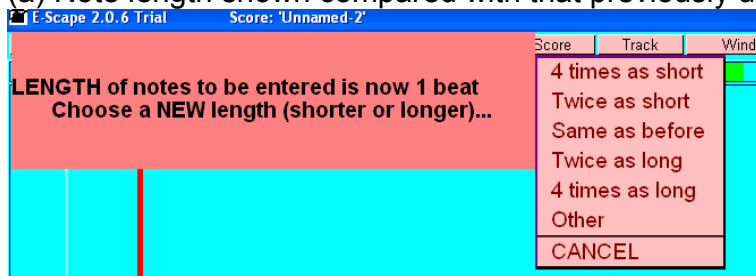


NB. Notes can also be moved afterwards, via the edit menu.

### Setting the length of notes

The 'step length' sets how long a new note be when you write it in. The length can be shown in simpler or more formal musical language, depending on how experienced you are....

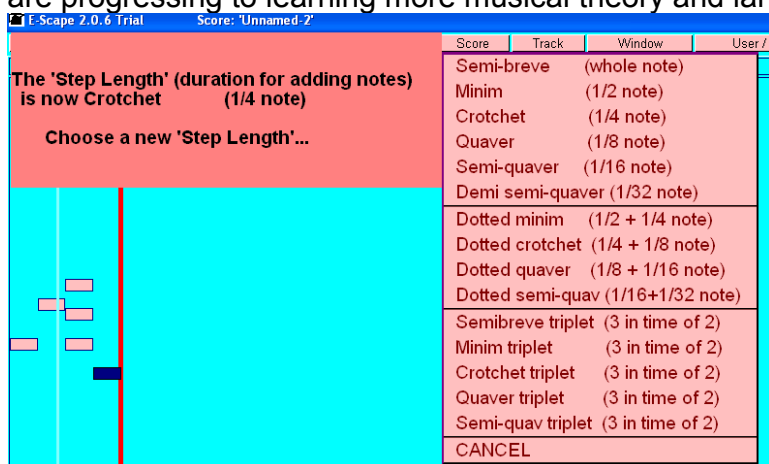
(a) Note length shown compared with that previously used - good for total beginners:



(b) Step length shown in 'beats' - again good for beginners who haven't yet been taught much about musical language:



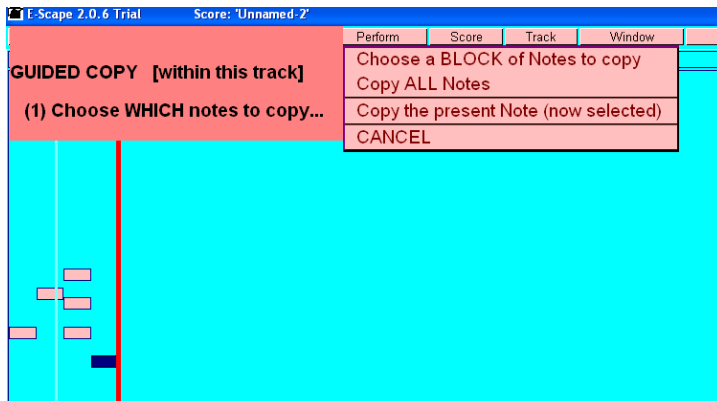
c. Duration shown in conventional Score notation (British and US) - good for people who are progressing to learning more musical theory and language.



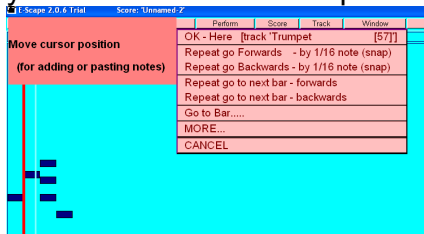
NB. Note length can be changed afterwards, via the edit menu

### Copying

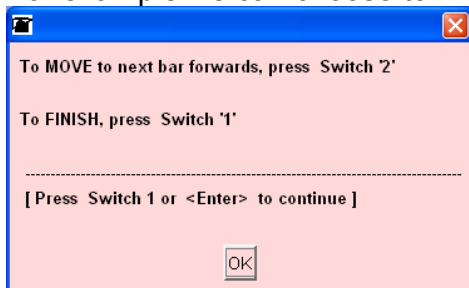
As well as the usual copy and paste options, you can also select a 'guided copy' option, where you are prompted through a guided procedure. You are first asked to select the notes you want to copy:



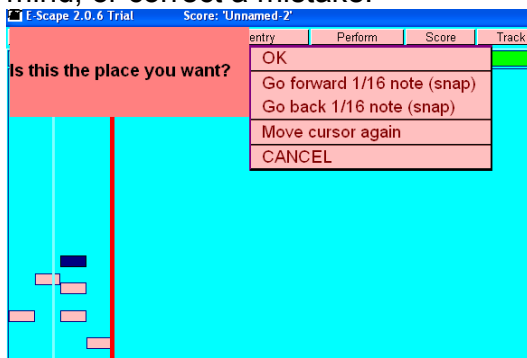
After finishing this (some steps not shown) you are automatically asked to choose where you want these notes copied to:



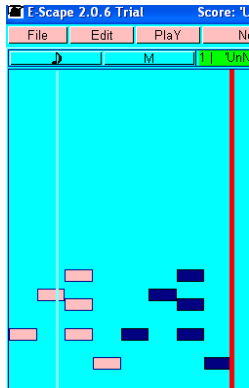
For example we can choose to move the cursor forward a bar at a time:



When at the right place, press the other switch, and you have a chance to change your mind, or correct a mistake:

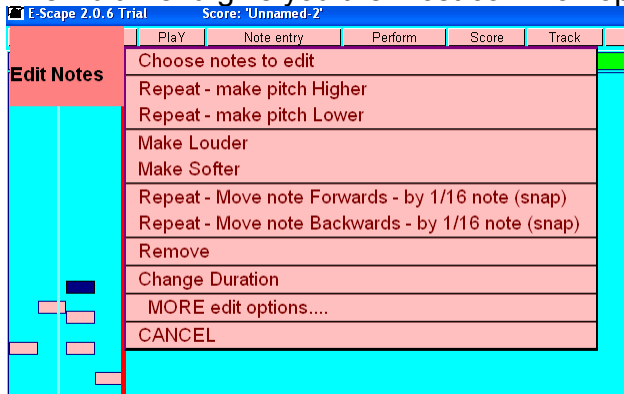


Finally, the notes are pasted at the new position:

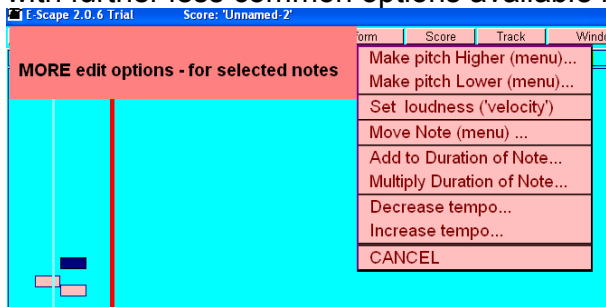


## A look at the 'Edit' menu

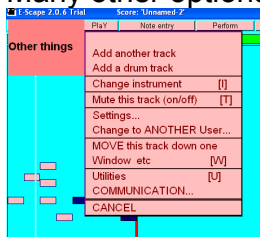
The Edit menu give you the most common options:



with further less common options available in a second menu:

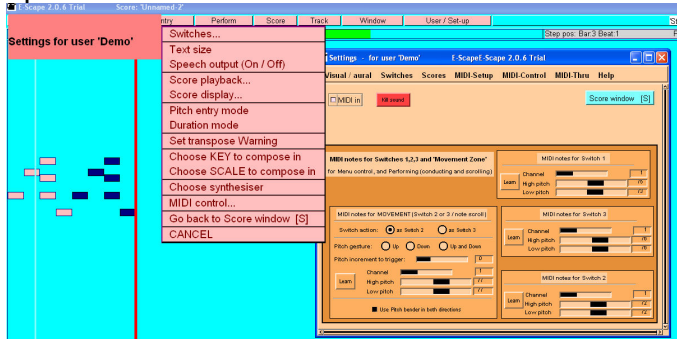


Many other options are available in further menus, for example:





You can change many settings to customise E-Scape's look and operation, as well as set up MIDI instruments to use as switches:



For example, you can change the text size of menus:

